

THE LEADER

VOICE OF

GRANITE BAY
Flycasters

JANUARY 1996

GRANITE BAY FLYCASTERS

P.O. Box 1107
Roseville, CA 95678-8107



FEDERATION of
FLY FISHERS



CALIFORNIA TROUT



KEEPER OF THE STREAMS

BULK RATE
U.S. POSTAGE
PAID
ROSEVILLE, CA
PERMIT NO. 713



GRANITE BAY FLYCASTERS
P.O. Box 1107
Roseville, CA 95678

OFFICERS

President	Wayne Dahl	726-1584
Vice President	Kim Roccoforte	642-2929
Secretary	Danielle Hickman	961-1664
Treasurer	Greg Rowe	791-0787

DIRECTORS

Through 1996	Paul Roccoforte	642-2929
Through 1996	Terry Burkes	363-7990
Through 1997	Bruce Cline	985-6745
Through 1997	Vern Stubbs	663-2801
Through 1998	Terry Eggleston	331-5258
Through 1998	John Hogg	823-9744
At Large	Tom Klienfelder	363-6634
Past President	Michael Wasserman	677-7189

COMMITTEES

Annual Dinner	Rich Brown	797-0309
Conservation	Jim Coleman	885-4128
Editor	Bruce Bartholomew	983-7719
Egg-Raising Project	Rick Radoff & Mark Neice	624-2107 624-1837
Fishmaster	Paul Roccoforte	642-2929
Gatekeeper	Steve Bertrand	369-8809
Golden Trout	Vern Stubbs & Steve Bertrand	663-2801 369-8809
Historian	Warren Schoenmann	725-2542
Librarian	Danielle Hickman	961-1664
New Member Hot-Line	Paul Roccoforte	642-2929
Programs	Robert Tamson	967-3317
Public Relations	Frank Stolten	725-6894
Raffle	Joe Gildone	786-0457
Refreshments	Terry Wasserman	677-7189
Training & Education	John Hogg	823-9744
Youth Counselors	Jeanne & Ron English	667-7169

Calendar of Events
Including Fly of the Month

January

11	Little Winter Stonefly (Dry) Club Meeting - Clubhouse 7:30
13	Putah Creek - Steve Bertrand Youth Outing - Arden Pond - Rod or Jeanne English
18	Board Meeting - Clubhouse 7:00
17-21	ISE Show - Cal Expo
27	NCC/FFF Exposition - Fort Mason 9:00AM

February

3	BGF Annual Dinner
8	Club Meeting - Clubhouse 7:30
10	Lake Amador - Paul Roccoforte
15	Board Meeting - Clubhouse 7:00

March

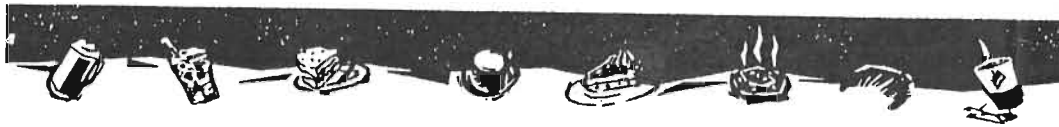
14	Club Meeting - Clubhouse 7:30
21	Board Meeting - Clubhouse 7:00
23-24	Point Reyes - Kerry Wilson Donna Cunningham

STEELHEAD DAY

Enjoy a fun filled day January 27th from 9AM to 3PM at the Nimbus Hatchery. Demonstrations and presentations will feature many topics from fishing techniques and locations to fly tying, fish printing and games, to hatchery tours, current research and restoration activities.

This event is co-sponsored by the California Department of Fish and Game and California Fly Fishers Unlimited. For more information call 358-2885.

Note: This is the first of a series of events scheduled by DFG for early 1996. Plans are being formed now for GBF to participate in some of these event. If you are interested and can help please contact any club officer.



Free Coffee ^{with purchase of}
Commuter
Mug

\$2.25
(plus tax)

- Purchase a Java Centrale 22 ounce hot and cold insulated travel mug with a no-spill lid and we'll fill it, at no extra charge, with your choice of our fresh brewed coffees of the day. Then you can refill your Java Centrale mug, whenever you want, for only 99 cents.
- This limited time offer available while supplies last. Not valid with any other offer.
- Join us for Java, breakfast pastries, deli-debicious sandwiches, soups, salads and mouth-watering desserts.
- Cafe open 7 days a week. Drive thru open from 6 a.m. for coffee beverages, pastries and desserts only.

JAVA
Centrale
811 Wales Drive (in Raley's Center)
916/983-9264
Folsom, CA

PRESIDENTS MESSAGE

Happy New Year! Mike led us through a very good 1995 and the club accomplished many of our objectives. Thank You Mike! We need to keep up the pace in 96 and maybe do even a little more.

Our annual dinner is set for the 3rd of February. As you know, this is our major fund raiser for the club, and as such, is financially extremely important for us. In order to be able to do all the projects we have on our slate, we need every members help in making this a success. Don't forget to get your donation for the raffle in. We need at least one item from each member. Rich Brown and his crew have planned a great show that you won't want to miss. I have seen Mike Lawson before and I can guarantee you that you will be impressed and I'll bet each of us will learn something about fishing. Make sure you get your tickets before they are all gone and while your doing that, ask Rich if you can be of any help. Talk to your non-member friends and invite them to attend, they'll have a great time and we might even pick up some new members.

I would like to challenge each member to participate in at least one of our projects this year. There is something available for everyone. We need people to staff our booth at the ISE show at Cal Expo this month, help with the annual dinner in February, help with the annual picnic, give Jim Coleman a hand on the Bear River project, conduct an audit/survey of all GBF owned equipment, help with the egg-raising project - just to name just a few opportunities. We would also like someone to conduct a rod-building or net-building class, or if you have some other talent, please let anyone on the board know. The Granite Bay Flycasters Youth Group is another area where each of us

can be of help. Ron & Jeanne English have built an impressive program and are planning even more fishouts and activities this year. Bring your kids out and join them, you won't be sorry.

In 1995 we made a major step with the Bear River Project and the results are apparent to anyone who wants to take a short stroll and check it out. I am confident we will continue this effort but, we also need a new goal for ourselves in 96. I cannot think of anything better than to be able to practice our casting on our own casting pond. I want to encourage each and every one of you to help make this a reality, so that next year we can invite the other FFF clubs to come to OUR POND and challenge us to some good natured competition.

I am particularly interested in any ideas, comments, suggestions or criticism you might have, so don't hesitate to voice your opinions. Call me (726-1584) or any other board member and lets talk. Let's hit 96 running and we'll all have a good time. Just don't forget to take out enough time to wet a line every so often.

Wayne Dahl
President



RE/MAX Superstars!

Robert J. Tamson
OWNER/MANAGER



The Flyfishing Realtor

OFFICE (916) 967-3033 FAX (916) 974-3935
4126 Manzanita Avenue, Suite 400 Carmichael, California 95608

GBF Youth Group News

We would like to have an outing on January 13 at Arden Pond. We will meet there at 9AM. Please contact Ron or Jeanne English (677-7169) if you would like to attend. If no one calls this outing will be canceled.

On February 3rd we will be selling hot-dogs at the day program before the club dinner. The program will be at the clubhouse and we will need youth volunteers to work at the hot-dog concession. We could also use the help of a parent to supervise.

Ron and Jeanne English




All Awards

- Trophies - Plaques
- Custom Nametags
- Custom Lapel Pins
- Group Discounts
- YOUR LOGO PRINTED ON ALMOST ANYTHING
- T-Shirts - Hats - Jackets
- Mugs
- Keychains
- Decals, etc.

ROBERT SMITH
Owner
(916) 729-0505

7335 Greenback Lane
Citrus Heights, CA 95621

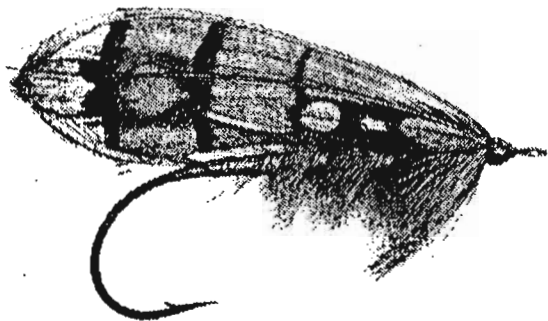
Editor's Notes

by Bruce Bartholomew

This is the first time I've ever tried doing a bulletin. Hang in there while I learn how to do this and get comfortable with it. Following Wayne is no easy task. Thanks to him GBF has one of the best fly fishing bulletins in the country.

I need articles to include in each month's Leader. Either mail your material to me at 336 Prewett Dr., Folsom, CA 95630, or give it to me at the general meeting. If you want to remain anonymous that's fine. If you want it edited or left untouched that's fine too.

The cut off each month will be the Saturday following the board meeting. The cutoff for the February bulletin will be January 20. This gives me enough time to get everything together.



Help Wanted

A member is needed to take care of the club merchandise, shirts, hats, etc. This person would be expected to attend meetings, set out the merchandise, collect money and then turn it over to the treasurer. It's the little jobs like this that keep the club running. If you are interested please contact any of the board members and let them know.

JANUARY PROGRAM

Bill Kiene, the owner of Kiene's Fly Shop, will be January's speaker. Bill has traveled the world flyfishing as his program, Fishing the Yucatan, shows. Join him for an enjoyable evening at the general meeting in January. Cure those winter blues by dreaming of bonefish, tarpon, permit and other saltwater species.

RONALD L. OTTO, D.D.S., M.S.
Diplomate American Board of Orthodontics

A Professional Corporation

Orthodontics for Children and Adults

125-B Ascot Drive
Roseville, CA 95661
Telephone (916) 786-2442



4310 DUNSMUIR AVENUE
DUNSMUIR, CA 96025

(SHOP) (916) 235-2969

Ted Fay Fly Shop

Guide Service
Fly Fishing Instruction
LOCATED AT THE GARDEN MOTEL
235-4805

JOE KIMSEY
(916) 235-2872 HOME

FORMER LIBRARIAN'S REPORT

by Kim Roccforte

Thank you to all of the GBF members who have kept the library circulating! Please welcome the new librarian, Danielle Hickman, and make her job easier by returning all tapes and books the month following checkout.

Some of our members still have materials out well past the one month checkout time. Please return all overdue material at the next general meeting or mail them to the club P.O. box along with fines of \$5 per month per item, or you may donate items to the general raffle. Fines benefit the library, raffle and encourage circulation. A list of members with overdue items will published in next month's Leader

Thank you to Jon Evans for donating a new book at the December meeting, Float Tubing Fishing by Deke Meyer.

AMERICAN FLY FISHING CO.



SCHEDULE OF EVENTS!

JANUARY...

WEDNESDAY EVENINGS—Intro. to Fly Tying—three nights \$39.95

THURSDAY EVENINGS—Advanced Fly Tying—three nights \$39.95

Jan. 6: ROD BUILDING SEMINAR

10am-1pm Rick Fox and Kent Gasch. \$10 Class limit: 12.

Jan. 6: INTRO. TO FLY FISHING

8am-1pm. Al Bunch \$29.95 Only two openings.

Jan. 13: STEELHEAD CLINIC

8am-3pm. All day on the water with Al and Norm. \$10

Jan. 13: CASTING CLINIC—8am-10am \$19.95

Jan. 13: FLY TYING CLINIC—DRY FLY WINGS

1-4pm Brett Drury. \$10 Class limit: 8

Jan. 20: INTRO TO FLY FISHING

8am-1pm. Al Bunch. \$29.95 Only two openings.

Jan. 20: ROD BUILDING SEMINAR

Rick and Kent. 10am-1pm \$10 Class limit: 12

Jan. 27: ANNETTE LILLY RUSS—FLY FISHING CLINIC FOR WOMEN

One of the best instructors in the West! Noon to 4pm. \$15 Class limit: 10

Jan. 27: CASTING CLINIC 8am-10am \$19.95

Jan. 27: FLY TYING CLINIC—DUBBING TECHNIQUES

Brett Drury. 1-4pm \$10 Class limit: 8

COMING IN FEBRUARY...

Feb. 10: JOHN MCKIM, author, artist, tyer, humorist. 10am-1pm \$15 Class limit: 12

Feb. 17: JAY MURAKOSI, CA coastal and Baja seminar. Expert tyer and lecturer,

Jay will share his fishing and tying secrets! 10am-1pm \$15 Class limit: 12

Feb. 24: RON HART presents a clinic on the techniques, locations & special fly tying patterns for the great upper Sacramento River. 10am-1pm \$15 Class limit: 12

RESERVE YOUR PLACE IN ADVANCE—ENROLLMENT IS LIMITED!

3523 Fair Oaks Blvd. • Sacramento, CA • (916) 483-1222

JANUARY SPECIALS!

20-30% OFF
Selected Float Tubes

Flies—Choose 24 flies for
just \$12! Old stock—making
way for new selection.

Selected Fly Rods
(3-12 wt.)
10-50% OFF!

Blem Blank Blow Out!
reg. \$30 to \$200 (4-12 wt.)
SALE! \$5.88-70.00

3mm Neoprene
Chest Waders \$49.88
with purchase of boots!



UPPER SAC! GREAT TROUT ON THE FLY!



FLY FISII TIE SCENIC UPPER
SACRAMENTO RIVER
DUNSMUIR, CA
30 MILES OF CATCH N' RELEASE WATERS

CALL 1-800-FLY-FSIIN
TOLL FREE RECORDED REPORTS
TRADITIONAL TED FAY METHOD
UP-STREAM NYMPHING CLINICS
18 YEARS UPPER SAC EXPERIENCE

RON RABUN, LICENSED GUIDE
The Big Ed Fish Society

Vice President's Report

by Kim Roccoforte

As the new year begins we can all look forward to a great year with GBF. Our new club president, Wayne Dahl, has remained active behind the scenes and now as president, I am excited about the future of our club.

Among my new duties is Membership Coordinator. I have included a membership application in this Leader for you to fill out and bring to the general meeting or mail to the club post office box with your check. Please make certain that the information is complete so that you will continue to receive a Leader each month. The suggestions which you include will be reviewed by the Board of Directors and will help shape the direction of the club.

ANNUAL DINNER REPORT

by Rich Brown, Dinner Chairman

February 3 is the annual dinner. Mike Lawson of Henry's Fork Anglers will be our guest speaker. Mike will also present a day program on various flyfishing techniques at the Clubhouse from 10 to noon. Your dinner ticket entitles you to attend the day program

The dinner starts at 5PM with a no-host bar. Buffet barbecue will be served starting at 6:30.

Ticket sales have been very good. Last year's dinner sold out. If you haven't bought your ticket, do it now. Tickets will be available at the January meeting or you can call me. Tickets are \$30.

We are short of raffle prizes. We are asking each member to donate a prize - even if you can't attend the dinner. Anything from a bottle of wine to something you pick up at one of the shops will be greatly appreciated. In January our Dinner Committee members will be calling each member to arrange to collect the raffle items.

This is our major fund raiser for the year - the participation of each member will help insure that the GBF Annual Dinner remain the premier event of its type in Northern California.

Rich Brown
325-4565 days
797-0309 eves

Wayne B. Dahl
Marketing Representative

John Hancock Mutual Life
Insurance Company
Sacramento-Wolf
General Agency
2180 Harvard Street
Suite 265
Sacramento, California 95815
Bus.: (916) 921-6000
Fax: (916) 567-8111
Res.: (916) 726-1584



WORLDWIDE SPONSOR

John Hancock

Boston, MA 02117

Kiene's Fly Shop



Tackle

Kiene's Fly Shop features one of the largest inventories of fly tackle and tying materials in California. Every major brand is represented.

Travel

Travel with us on a hosted trip to Alaska, Argentina, Baja, British Columbia, Christmas Island, New Zealand, Yucatan and more.

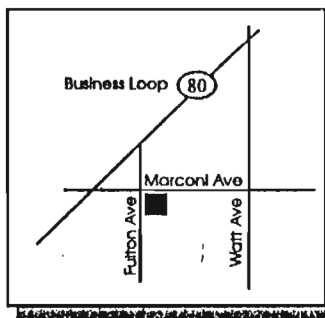
Education

We offer many educational opportunities including classes in fly tying, fly casting, rod building and entomology, the one day Kiene's Fly Fishing Schools, the three day Kiene's Fly Fishing Seminar, and the annual Kiene's Fly Fishing Expo.

Hours

Monday-Friday 10 ~ 6
Saturday 9 ~ 5
Sunday 12 ~ 5

Call us for the latest fishing updates or for information regarding tackle, travel, or our schools.



FLYTYING CONTEST

Pattern for January Contest: Little Winter Stone, featured in December Leader.

Contest rules: Don't be reluctant to submit your entry. As for a critique if you want help, or what the winning fly has that yours does not.

judging will be during the meeting

winner announced just before program

winner get a new fly box

each entrant gets free ticket on which name and phone number are printed

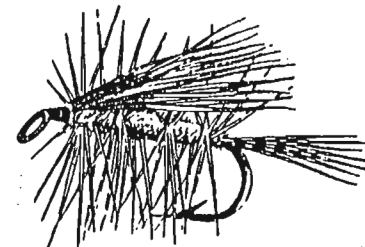
tickets are deposited in a sealed box each meeting

drawing held at annual picnic

winner gets a \$100 gift certificate at fly shop of choice

fly must be tied in accordance with instructions from the Leader (right or wrong, and irrespective of whether you find another version on the pattern in a book somewhere) in order to keep the playing field level. The judges need to make a choice based on a single pattern.

experienced tyers will be allowed to participate, but will compete among themselves for a separate flybox prize. "Experienced" means those who have won the contest three or more times, or who are recognized experts (you know who you are).



2654 Marconi Ave. Sacramento, CA 95821 916/486-9958 800/4000-FLY

4. Before tying back on, trim mylar tubing at front of hook, to a point just behind the eye. This will leave enough room to tie the mylar down and not crowd the eye.
5. Now stretch to tubing forward, thus tightening up the body, and tie the thread back on just behind the eye. This will complete the body.
6. The egg sac must now be prepared. Take some 20 pound monofilament and carefully heat one end, forming a small ball. Be very careful with this; if too much heat is applied, the material will drip onto your clothes or skin, and can cause severe burns. Tip: put the mono against the side of the flame, rather than applying the tip of the flame to the mono.
7. Once the mono piece is prepared, slide the bead onto it, and park it against the ball. The bead facing rearward and the mono protruding forward, mount the whole rig on the underside of the hook as indicated below. The bead should be about 1/8 to 3/16" behind the eye, in order to leave room for tying on the "wing" and forming the head.
8. When the mono is secured with thread, place a tiny drop of waterproof superglue on the mono (don't let it leach up into the bead because it will discolor the bead). Then carefully trim the mono with a razor blade, at an angle.
9. Now take a small amount of white marabou and a few strands of crystal flash, and mount a wing just above and ahead of the bead.
10. Build a nice tapered head and cover with a hard, shiny head cement. Alternatively, finish a number of these patterns, and then mix some five-minute epoxy; cover all heads with epoxy at one time, and set aside to dry.
11. Once the head cement or epoxy is dry, use a combination of black/white, black/yellow, or other selection of choice, to imitate eyes.

FISH MASTER'S REPORT

by Paul Roccoforte

Following are the first three schedule fishouts for 1996. Each of these falls on a Saturday and will be preceded by an informal reconnaissance trip during the week.

January 13 - Putah Creek lead by Steve Bertrand (369 8809)

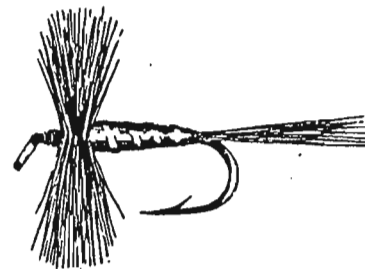
This stream receives a lot of pressure and in turn is hard to fish. Nymphing with small flies is the rule. Steve will demonstrate some of techniques on how to fish Putah Creek. A map to this fishout will be available at the January general meeting.

February 10 - Lake Amador lead by Paul Roccoforte (642)-2929

This is a good trip for beginners. Large trout are possible. A float tube or pram is necessary.

March 23-24 - Point Reyes for Surf Perch lead by Kerry Wilson and Donna Cunningham (962-2113)

Additional information will be available at the general meeting before each fishout. If you have any questions on fishouts call me (Paul) at 642-2929 or the fishout leader.



FLYTYER'S CORNER

By Bill Carnazzo

January, 1996

Alebilly

At the December general meeting the new Leader editor asked me whether I was going to continue to author this column. Unsure of the reason for that question, which could contain a buried double meaning, my affirmative response was not immediate -- or, for that matter, final. The jury is still out.

For 1996, this column will continue to feature a fly which is related to an upcoming outing. However, if individual members wish to have a particular fly featured, now is the time to speak up -- since we try to publish in advance the flies which will be featured for the entire year. In order to accommodate requests, no list will be published until the February edition of the Leader. In the meantime, individual members can register requests by calling me at 663-2604.

This month's featured pattern is (whimsically) called Alebilly -- because it is designed to imitate the "alevin" stage of the life of a Salmon, and because it is an original design, conceived while observing live specimens. An alevin is a just-hatched Salmon fry which still has the egg sac attached to its underside. The phase of its life lasts a few weeks, and until the sac is absorbed into the body and disappears. Survival is tentative at best for these young of the year; between being at the mercy of the elements (heavy flows can devastate them) and a host of predators, their ability to survive depends on remaining hidden and sheltered among the rocks on the bottom.

Fish this imitation right on the bottom, with an indicator, during the time that the steelhead appear to be feeding on alevins.

See ya on the creek!!!

In creating this pattern, the emphasis was on those peculiar characteristics of the alevin lifeform which seem (to me at least) to be the probable strike "triggers" for Steelhead during the short time during which their attention is focused on this food source. These characteristics are the filmy, translucent egg sac; the slim, somewhat translucent/silvery body; and the eyes. The materials selected are intended to *suggest* those characteristics.

Materials:

Hook	Tiemco 200R, #8-12
Thread	White 6/0 or 8/0
Body	Pearlescent mylar tubing (small)
Wing	White marabou; wisps of pearl crystal flash
Egg sac	Medium pearlescent plastic bead
Head	Tying thread
Eyes	Painted
Weight	Optional

Tying Instructions:

1. Cover hook with thread after smashing barb. If using lead weight, wrap small lead along shank and cover with thread. To create the impression of a body shape, you can build up a "cigar" shaped body with thread. Leave thread at a point just above the barb.
2. Slide mylar tubing over eye and down shank, allowing it to stick out just beyond end of hook. Fray the ends slightly to create impression of a tail.
3. Tie off at the exact point where thread was left dangling. The frayed ends should remain sticking out to the rear. Whip finish at this point.

What's Hot and What's Not (continued) - The Fishing Report from *Fish First!*

Fishery	Water Conditions	Fishing Conditions, Techniques, and Hatches	Flies	Comments
Putah Creek (Lake Berryessa to Solano Lake)	Normal green/brown color, low flow, low 50°F's.	Fishing is spotty. Indicator nymph with small mayfly nymphs. Small glo-bugs also producing. Fine tippets are the rule. Best action is from 10 am on, as water warms. Larger rainbows are beginning their spawn; a few 20" have been reported. Do not wade the spawning redds.	BWO (Blue Winged Olive) nymph - poxyback, Burk's leg nymph, PT, brassie, olive disco midge, barr's wet emerger (#16-20). BWO emerger/dry - floating nymph, RS2, foam floating nymph, Harrop short wing emerger, DB baetis emerger, Lawson's halfback emerger, marabou cripple, CDC transitional dun, Stalcup biot dun, hi-vis parachute, sparkle dun (#16-22). Caddis (see Lower Sac River).	Access the water at any of the day use areas. Keep moving to find willing fish.
Sacramento River, Lower (Redding to Anderson)	Clear, cold, low 50°F's, 4800 cfs.	Fishing is fair. Indicator nymph with a caddis pupa and a BWO dropper. Best action from mid-morning on. BWO hatch in afternoon has some trout rising in the flats. Try streamers on a sink tip if fishing is slow.	Radden's single and triple eggs (#12-16). Caddis pupa - SRI mono eye caddis, Ligas' scintillator, Fabini terror, beadhead lite brite, LaFontaine sparkle pupa, Nori's pupa, z-wing caddis, serendipity, glass bead pupa, peeking caddis (#12-18). Caddis emerger/adult - Bett's The Fly, Harrop slow water, elk hair, goddard, SRI real, CDC buck, emerger/diving, Mathew's x-caddis, King's River, SRI hi-vis (#14-18). BWO (see Putah Creek). Streamers (see Pyramid Lake).	Wading is possible at Posse Grounds, Turtle Bay, Clear Creek, & Knighton riffle.
Smith River	Low flow, clear. 2370 cfs at Jed Smith State Park	Some steelies are in the system. Try fishing the South Fork for easier flyfishing. Use 225 & 325 gr sinktips to swing small (#6-8) bosses and skunks. During low water, floating lines and glo bugs are also good choices.	Polar shrimp, boss, comet, skykomish sunrise, purple peril, green butted skunk (#4-8). Streamers (see Pyramid Lake). Glo bugs (champagne, natural, cheese) (#6-10).	Expect the main run of steelies to show in the next week or two.
Stanilaus River (below Tullock Reservoir)	Clear, low 50°F's, moderate flow (290 cfs).	Opens 1 Jan. Expect fair to good fishing with beadhead caddis pupa and BWO nymphs. Best action will be from mid-morning on, as the water warms. Some BWO hatching in the afternoon.	Beadheads (prince, olive hares ear, pheasant tail, lite brite, zug bug, SR soft hackle) (#12-16). BWO (see Putah Creek). Caddis (see Lower Sac River).	
Trinity River	Clear, low 40°F's. 300 cfs from Lewiston Lake.	Fishing is fair, and improves when cloudy/overcast. Most steelies are running 3-7 lbs and are located from Junction City to Lewiston. Fish a golden stonefly nymph with a small glo-bug dropper under an indicator. Swinging dark traditional steelhead patterns also producing.	Stoneflies (see Yuba River). Brindle bug, mossback, bread crust, skunk, green butted skunk (#6-8). Glo bugs (see Lower Sac River).	Better numbers of adult steelies in the river than the past few years.
Yuba River (below Englebright Dam)	Clear, low 50°F's, moderate high flow.	River has been unfishable until today. It is slowly clearing and dropping. Expect fair fishing. Indicator nymph with stonefly, caddis, and BWO mayflies for rainbows from 10-17". Dry fly fishing will improve as water clears.	Stonefly nymph - Beadhead biot stone, superior stone, Barr's dark stone, braided bitch creek, black rubberleg, chez sparkle stone, brownstone rubberleg (#6-12). Stonefly dry - SRI irresistible stone, Kaufmann's stimulator, improved stone, golden stone rubberlegs, madam X (#6-12). BWO (see Putah Creek). Caddis & glo-bugs (see Lower Sac River).	Expect stonefly hatch next month.
<p>Sale items - All flyrods listed are 25% off regular prices - G Loomis IMX flyrods 9' 4wt 2-pc Reg \$365, 9' 5wt 4-pc Reg \$420, 9' 6wt 4-pc Reg \$425, 9' 6wt 7wt 2-pc Reg \$385, 8' 3wt 2-pc Reg \$355, 8' 4wt 2-pc Reg \$355, 10' 3wt 2-pc Reg \$365, 10' 4wt 2-pc Reg \$365. J Kennedy Fisher Natural flyrods 9' 5wt 2-pc Reg \$195, 9' 6wt 2-pc Reg \$205, 9' 6wt 3-pc Reg \$250. J Kennedy Fisher Presidential 9' 8wt 3-pc Reg \$420. All new, with full factory warranties. Patagonia capilene midweight underwear tops, Reg \$31-35, 40% off.</p>				
<p>Our Fish With Us one-day clinics will allow you to learn access points, resident aquatic insects, and productive fishing techniques. Depending on the fishery and time of year, instruction will cover rigging and presentation for nymph, dry fly, and streamer fishing. After completing our clinics, you will be able to fish the same water with knowledge and confidence by yourself. Dates have been selected to coincide with prime hatch and fishing conditions to maximize your opportunity for angling success. Clinics are limited to 3 students per instructor.</p> <p>Putah Creek - Close proximity to the Bay Area, low flows, and large rainbows make this a great winter destination for a day trip. Learn short-line nymphing and streamer techniques, while accessing the most productive stretches of the stream. 20 Jan 96. 17 Feb 96. Cost \$110 per person.</p> <p>Feather River Steelhead - What a way to start the New Year! The area we fish opens the first of January, and the steelhead will be plentiful and eager. Traditional steelhead techniques, as well as indicator nymphing, will be emphasized. We'll be on the water by dawn. Expect fast and furious action for the first few hours of daylight. 1, 2, 6, 7 Jan 96. Cost \$110 per person.</p>				
<p>Other reports - Russian River is muddy; steelies are in the system, but it will be 3 January before it is clear enough to flyfish. Gualala and Garcia Rivers are running clear, but only a few fish have moved in. One more good rain will get these rivers cranking. Redwood Creek is in good shape, with some steelhead in the system. Most action is from Prairie Creek downstream. Look for more fish to move in soon. Matole River opens 1 Jan; as of this report, it is raining and the river is blown out. Check before heading up. Truckee River in Nevada is slow; use large nymphs and streamers. Best action is close to the state line. Davis Lake has slowed and is ready to freeze for the winter. Klamath River is muddy.</p>				
<p>Mark your calendar - 27 January 96 the Hall of Fame Benefit for the California Sportfishing Protection Alliance will be held at Fort Mason. A day of fly tying with over 50 premier tiers, topped off with a buffet dinner will benefit one of the top conservation groups in the state. Contact Fish First I or your local Federation representative for more info.</p>				
<p>This fish report would not be possible without the help of Mike/Eureka Fly Shop/Eureka, Alan Barnard/Kiene's Fly Shop/Sacramento, Keith/Powell Fly Shop/Chico, Randy Johnson/Johnson's Guide Service/Russian, Gualala, Garcia Rivers. Herb Burton/Trinity River Fly Shop/Lewiston, Roger Raynal/North Rivers Guide Service/Klamath River. Help keep this report updated - call in with your own experience!</p>				

This fishing report is provided courtesy of *Fish First!*, 1404 Solano Avenue (between Carmel and Santa Fe), Albany (North Berkeley). 510/526-1937. *Fish First!* As a full service flyshop. Call them if you want to be put on the fax distribution of this report and visit them when you head out fishing. Access to their shop is easy from Interstate 80. Open 10-7 pm Mon-Fri and 10-5 pm Sat-Sun.

What's Hot and What's Not (updated 27 December 1995) - The Fishing Report from *Fish First!*

Fishery	Water Conditions	Fishing Conditions, Techniques, and Hatches	Flies	Comments
<p>If you are receiving this report by fax, we ask that you renew your membership for 1996. Purchase \$50 or more in merchandise (either in store or mail order, we ship for free). At the time of your purchase, remind us to add you to the 1996 list. If you do not want to make the minimum purchase, we'll keep you on the fax list for a flat rate of \$35.</p>				
Baum Lake	Clear, weedy, low 50°F's.	Fishing is fair. Midge hatch starts midmorning, followed by a sporadic BWO hatch. Fish small nymphs under an indicator on 7x tippet for rainbows running 10-18". Some fish also working the dries; keep moving to find rising fish (recent wind/rain has slowed dry fly fishing). Try streamers if the trout do not like your small offerings.	Midge pupa/larva - disco, Kaufmann's midge pupa, gray midge pupa, brassie, midge biot (#18-22). Midge emerger/adult - Bett's midge emerger, Harrop midge adult, griffith's gnat, palamino, CDC hatching midge, CDC midge adult, Harrop CDC transitional midge, parachute adams (#20-22). BWO patterns (see Putah Creek). Streamers (see Pyramid Lake).	Float tube or pram needed to access the good water. Fish near the dam or Tule Island.
Chetco River (Southern Oregon)	Green, moderate flow.	Steelhead are in the system, with more moving in daily. However, the fishing is not yet good. Swing 225 and 325 grain sinktips with bright steelhead flies for 6-12 lb chromers.	Polar shrimp, comet, skykomish sunrise, purple peril, popsicle(#1/0-4).	The Chetco gets a very good run of winter steelhead. A 20 lb steelie was caught this week.
Eel River, South Fork	Green color, moderate flow (480 cfs at Leggett)	The steelhead run looks excellent, with lots of adults spread throughout the system. 225-325 grain sinktips with a #6 boss or polar shrimp is the ticket. Glo bugs also producing in the slower runs. Fish are holding in the 4-6 ft deep runs and in the tailouts.	Polar shrimp, boss, comet, skykomish sunrise, purple peril, green butted skunk (#4-8). Glo bugs (champagne, natural, cheese) (#6-10).	Good access along Hwy 271, Leggett, Garberville, and Piercy. River is muddy below Myers Flat.
Feather River (below Lake Oroville)	Clear, low 50°F's, 6000 cfs.	High water makes the fishing tough. Lots of steelhead are in system, with most fish holding on the edges of the river. Do not wade directly into the stream; make sure you fish the edges first. Indicator nymph with a caddis pupa and a glo-bug dropper, or swing polar shrimp and wooly buggers on sinktips.	Polar shrimp (#4-8). Streamers (see Pyramid Lake). Caddis and glo bugs (see Lower Sac River).	The section above Hwy 70 opens 1 Jan 96.
Frank's Tract (Bethel Island)	Normal clarity, low 50°F's.	Fishing is spotty. Stripers are in the Delta, but scattered. If you can find the fish, action is very good for 3-8 lb fish. The trick is to cover a lot of water. Use an 8 or 9 wt rod with a fast sinking shooting head or lead core, and a fast retrieve. Fish 2 hours on each side of the high tide for best action.	Blanton's whistler, Lefty's deceiver, Abel anchovy, seaducer, bendback deceiver, sea bunny (#2/0-4/0).	Boat needed to access the good water. Chuck's Bait & Tackle rents boats.
Lewiston Lake	Clear, cold, low 50°F's.	Fishing is fair to good, but the weather is cold. Good midge fishing from 10 am to 4 pm. Fish near Trinity Dam or in the Lakeview Terrace area. A long leader with 7x tippet is needed to fool these wary rainbows and browns. Streamer fishing is also good throughout the day. Callibaetis hatch is over until spring.	Midges (see Baum Lake). Streamers (see Pyramid Lake).	Float tube or boat needed to fish effectively.
Mad River	Murky, clearing, 660 cfs at Arcata.	There are tons of steelies in the river. Visibility is 18" and improving; look for excellent conditions by 30 Dec. Swing streamers and traditional steelhead patterns on 225 & 325 grain sinktips. Best producers have been large bosses and polar shrimps. Glo-bugs on a floating line will also produce as water clears.	Polar shrimp, boss, comet, skykomish sunrise, purple peril, green butted skunk (#2-6). Streamers (see Davis Lake). Popsicle #1/0. Glo bugs (champagne, natural, cheese) (#6-10).	Fish near the hatchery, along Blue Lakes Rd, or hike upstream from the hatchery.
Mt Lassen Trout	Clear, low 50°F's.	Fishing is excellent for 4-15 lb rainbows. Top producers are streamers and callibaetis nymphs. Good midge dry fly fishing in morning and evening; the afternoon callibaetis hatch also has the fish looking up. Expect 6 to 20 hookups a day on these behemoths.	Callibaetis nymph - biot poxyback, Lawson's callibaetis, pheasant tail, poxyback, burk's leg nymph (#14-16). Callibaetis emerger/dry - CDC loopwing, marabou cripple, CDC transitional nymph, CDC transitional dun, Liabie CDC stillborn, paranymp, Lawson's floating nymph, sparkle dun, Stalcup CDC biot dun, thorax dun, Harrop captive dun, parachute (#14-16). Midges (see Baum Lake). Streamers (see Pyramid Lake).	Mt Lassen Trout is located 1/2 hour outside Red Bluff. This awesome pay fishery can be booked through <i>Fish First!</i>
Pyramid Lake (outside of Reno)	Cold, clear.	Fishing is fair to good for cuts running 16-20". Larger fish just beginning to show with the cold/snowy weather. Shooting heads with a variety of streamers are the ticket. Keep casting and retrieving until your arm wears out.	Streamers - Lite brite zonker, Janssen marabou leech, woolhead sculpin, krystal bugger, articulated leech, matuka, mini-leech, muddler minnow, lite brite minnow, mylar zonker, beadhead kyrstal bugger, beadhead minileech (#4-10).	

D 1/2

○ 1:51 PM

☞ 12/28/95

☎ 510-526-1938

Fish First!